



CROSS-BUSINESS- ARCHITECTURE LAB

**Building blocks for
digital transformation**

January 2025



Building blocks for digital transformation

The utilization of suitable building blocks for digital transformation is a critical factor of success in the competitive field.

The Cross-Business-Architecture Lab is a **user association with member companies from all business and industrial sectors. These companies jointly develop, refine, simulate, and implement best practices that benefit the entire association.**



Cross-Business-Architecture Lab

Overview

- The association
- Goals and benefits
- Our members
- Work models
- Focus of our work



The association

Cross

Cross-industry partnerships and ecosystems are the essence of digitalization, both internally and externally. CBA Lab connects divisions and departments, companies and industries.

Business

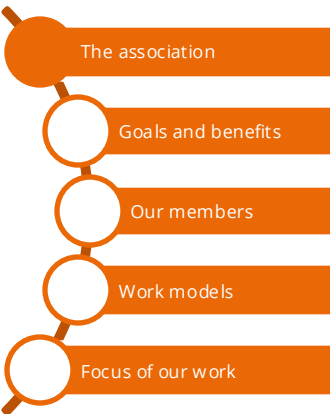
The digital transformation is blurring and dissolving the boundaries between IT and business. The CIO is no longer the only person responsible for IT and enterprise architectures in some companies; in fact, IT systems are now often built by the CDO and an increasing number of technical departments that are viewed as being on an equal footing in this regard.

Architecture

The DNA of the Cross-Business-Architecture Lab is based on architectures and modular building blocks for IT, business, governance, and organization, as well as data, services, and processes. The discipline that governs all of this today is known as enterprise architecture. Enterprise architecture is of fundamental significance with regard to digital transformation.

Lab

The Cross-Business-Architecture Lab doesn't just talk; it also goes into action when necessary. The joint workstream is the format used by CBA Lab to work on specific topics and issues – often in a lab-like environment using laboratory methods.



The Board



Manfred Kibler
BSH Hausgeräte GmbH
Chairman



**Dr. Karsten
Schweichhart**
Deputy Chairman and
Association Secretary



Ramzi Hamouda
SBB CFF FFS
Treasurer



**Florian
Masjosthusmann**
Responsible for
Research & Education



**Dr. Arun
Anandasivam**
TRUMPF
Werkzeugmaschinen
SE + Co. KG
Responsible for
External Partners

The association

Goals and benefits

Our members

Work models

Focus of our work

Goals and benefits

1. Exchange of knowledge and experience between application users

- Development of expertise and exploration of new approaches at large companies and organizations that use IT applications
- Access to relevant digitalization, SOA, and EAM knowledge and expertise from the real business world

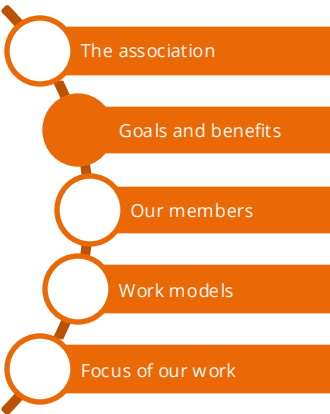
2. Employee training and continuing education

- Distributing effort and expenses “across many shoulders”
- More rapid availability of knowledge and experience

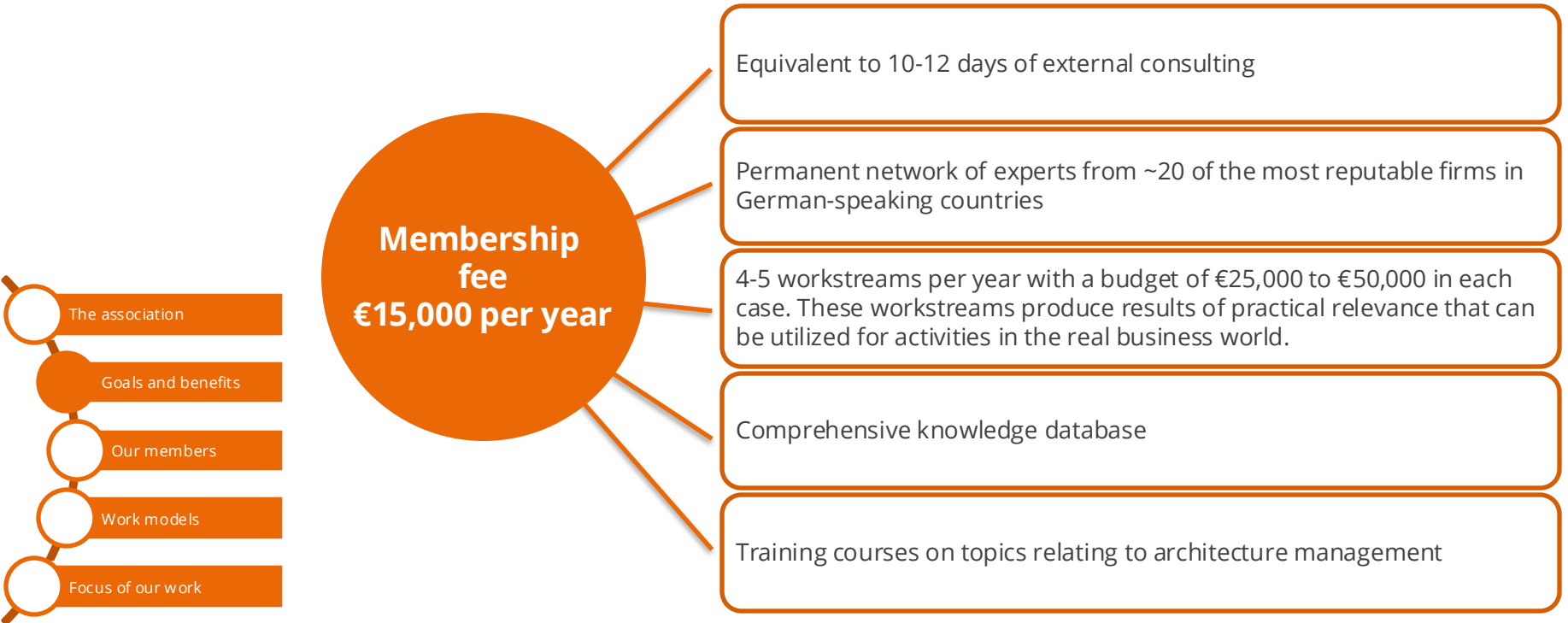
3. Joint development and testing of new procedures

- Strengthening of planning, management, and controlling capabilities with regard to strategic IT issues and implementation projects in the organization

Benefits: Greater efficiency at a lower cost!



Membership fee – an investment that pays off

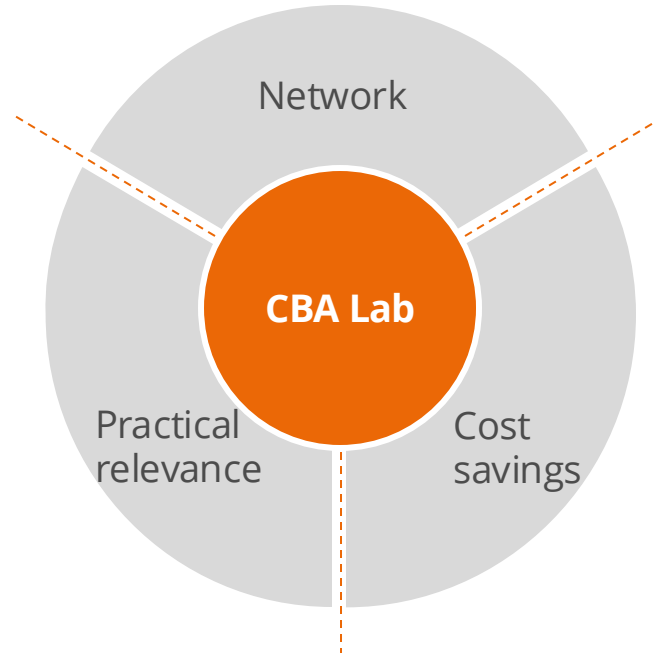


Knowledge increases when it is shared

- The association
- Goals and benefits
- Our members
- Work models
- Focus of our work

Learning from real business-practice examples:
Focus on results and solutions with practical relevance

Sharing success in a network: Access to relevant EAM knowledge and expertise provided by members, external experts, and universities



Cost savings: Comprehensive results at a low cost for each individual organization

Our knowledge platform

Coyo

- Exclusively for members
- Work platform for active workstreams
- In addition, access to all work results from workstreams that have already been completed
- News and interesting reports and stories from the network

The association

Goals and benefits

Our members

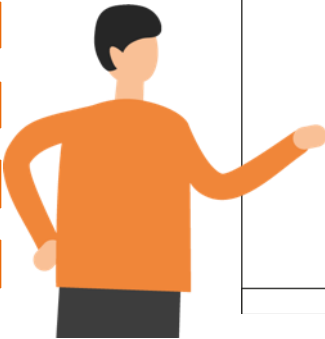
Work models

Focus of our work

The screenshot shows the Coyo knowledge platform interface. The top navigation bar includes 'Seiten', 'Communities', and 'Events'. A search bar is present. The left sidebar contains filters for 'Nach Status filtern' (Alle, Aktiv, Archiviert), 'Nach Mitgliedschaft filtern' (Alle, Mitglied, Administrator, Eingeladen, Angefragt), and 'Nach Kategorie filtern' (Workstreams, aktiv oder in Planung). The main content area displays several workstream cards, each with a title, description, and a 'Mitglied' button. The cards include: 'Auf dem Weg zu Zero-Trust', 'Business Driven Architecture', 'Data Catalog', 'Data Spaces Integration', 'Digital Navigator / Architekturen für Digitale Business Transformation', and 'EA and Sustainability'.

Our training courses

Cost savings achieved through training courses with participants from different member organizations



1. CBA Lab Architecture Training – free training courses from CBA Lab

... provide information on basic enterprise architecture concepts and the components used in an enterprise architecture function. Participants also learn how these components can be integrated in accordance with the needs of individual enterprises and also adjusted in line with the same.

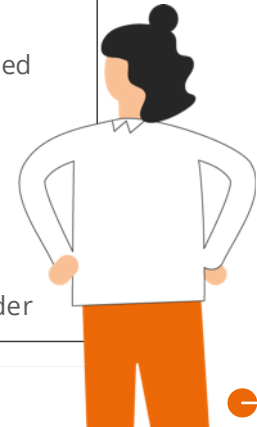
2. External training courses that can be offered at very favorable conditions:

SAFe for Architects – official SAFe for Architects training provided by Scaled Agile Inc.

TOGAF® (Version 10) Enterprise Architecture Course – Foundation

TOGAF® (Version 10) Enterprise Architecture Course – Practitioner

TOGAF® (Version 10) Enterprise Architecture Course – EA Leader



Cross-business training courses

Learning across company boundaries



Participants from all different types of member companies are trained together and thus gain an insight into EA systems and approaches at other companies.

The association

Goals and benefits

Our members

Work models

Focus of our work

Our member companies (selection)

KUKA



VOLKSWAGEN
AKTIENGESELLSCHAFT



DACHSER
Intelligent Logistics

B/S/H/



JUNGHEINRICH



BASLER

FESTO



SCHAEFFLER



The association

Goals and benefits

Our members

Work models

Focus of our work

Benefits for Members

CBA Lab – tailored to the needs of businesses



Benefits determined by the degree of commitment

A platform for business that focuses on application users. Most platform participants are companies that utilize relevant applications and systems. These companies offer their CIOs, chief architects and IT managers targeted access to CBA Lab.

Each company decides on its degree of commitment and involvement itself, thereby also determining the extent of the benefits it can enjoy. Activities here range from participation in the community to active involvement in specific projects and the development of the Cross-Business-Architecture Lab agenda.

Greater success, lower costs

- Reduced costs when developing new methods
- Greater likelihood of success
- More rapid achievement of results
- Utilization of expert knowledge from the real business world
- Access to an exclusive business forum

The Round Table

Direct exchange – live and open



The association

Goals and benefits

Our members

Work models

Focus of our work

Member meetings several times a year provide the large-scale forum needed to exchange information and ideas on new developments, results, the status of work in various areas, and new challenges that all of our member companies face.

These meetings, which run for a day-and-a-half, are always hosted by a different member company. They allow us to get to know one another and the different companies at which we work.



Workstreams

The member companies always work together to define and structure new workstream portfolios.

Member companies submit suggestions for topics that relate to **current issues of real business relevance** at companies.

Using the degree of interest expressed in each topic proposal as a basis, **the member companies work together to develop** the annual project portfolio.

All companies that decide to work on a specific project are sent a clear **declaration of commitment to participate** in order to ensure consistent progress and success.

Workstream
Portfolio

The association

Goals and benefits

Our members

Work models

Focus of our work

Workstreams

This is how we work together

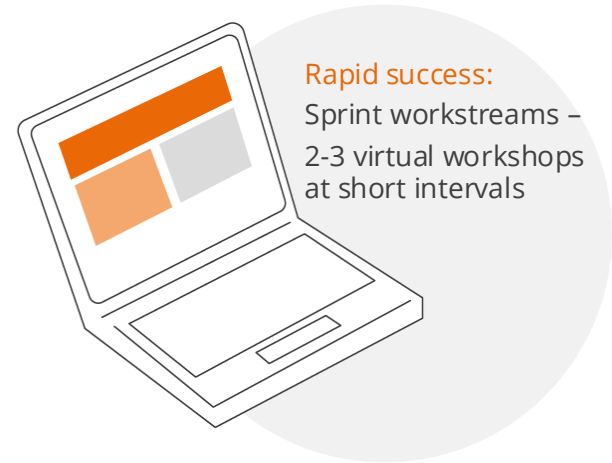
Joint and efficient development of forward-looking solutions

Work method:

Standard: 4-5 workshops lasting two days each; conducted in accordance with a project plan

Use of resources:

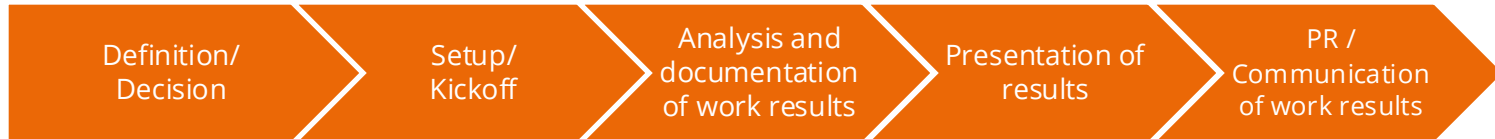
Minimum of 8-10 working days per workstream member



Rapid success:

Sprint workstreams –
2-3 virtual workshops
at short intervals

- The association
- Goals and benefits
- Our members
- Work models
- Focus of our work



Our current workstreams

- Architecture Vision
- Best Practices LeanIX
- EAM-Driven Data Strategy
- Effective EA Governance
- IT Demand Process
- Modular Composable Architecture
- Strategic Technology Portfolio Management



The association

Goals and benefits

Our members

Work models

Focus of our work

Examples from our results

- Big Data Guide
- Blockchain Guide
- Cloud Guide
- Mobility Guide
- Security Guide
- Capabilities – Best Practices
- Sustainability-Playbook
- Global distributed IT Architectures – Whitepaper
- Digital Navigator
- Referenzmodell Smart Services

The association

Goals and benefits

Our members

Work models

Focus of our work

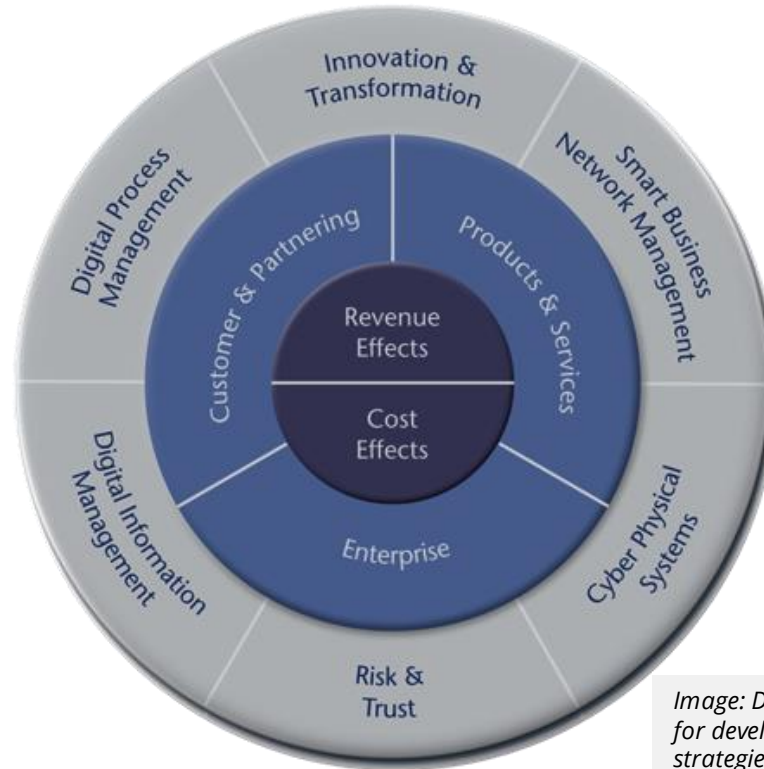


Image: Digital Navigator – tool for developing digital business strategies

Workstream portfolio 2007–2024



2010

- Business Case SOA
- Visualizing EAM
- SOA Security
- SOA and Standard Software
- SOA Enterprise Architecture Plans
- Formal Methods
- SOA Governance
- SOA and External Services

2011

- SOA Service Repository
- EAM KPIs
- EAM Principles

2007

- SOA Landscape
- SOA and EAM Training

2012

- SOA and Security
- Cloud Computing
- Architecture Reference Lab
- Information Architecture
- Architecture Emotions
- EAM with Tools

2013

- SOA and Mobility
- DSL for Service Modeling
- Cloud Computing
- EAM with Tools
- Architecture Reference Lab

2009

- SOA Technology Stack

2014

- SOA and Mobility
- Architectures for Digital Business Transformation
- SOA Training 2014
- EAM Tool Integration
- Identity Management

2015

- Training Lifecycle
- Architectural Principles for Digital Trends
- Big Data/Industrial Analytics
- Smart Services

2016

- Applied Agile EAM
- API Management
- Industrial Analytics
- Microservices

2017

- Data-Driven Business Models
- IoT Patterns
- Security

2019

- Accessible EA in a Digital Age II
- Digital Twin
- Next Level Enterprise Architecture Plan

2018

- Accessible EA in a Digital Age
- Blockchains
- Cloud Guide III

2023

- On the way to Zero Trust
- Business Driven Architecture
- Data Catalog
- EA and Sustainability
- EAM-Services Catalog

2021

- EA Communities & Communication
- AI/ML
- Low Code
- EAM – ISMS Integration

2020

- Digital Real Estate Lifecycle Management
- EA Repository Integrations
- Next Level Development Plan Pilot
- Office 365 Governance
- Product IT

2024

- Data Spaces Integration
- LI Governance
- Legacy Integration
- Scaled EA Organization
- Value-stream-oriented IT platform strategies

2022

- EA Governance of Low-Code Development Platforms
- EAM for Top-Level Management
- Global Distributed IT Architecture

Contact

Cross-Business-Architecture Lab e. V.

Hinter Hoben 149

53129 Bonn, Germany

Tel.: +49 228 55 51 131

E-mail: info@cba-lab.de

www.cba-lab.de

The **Cross-Business-Architecture Lab** is an association created by application users for other application users. CBA Lab works with and for its members to develop innovative “building blocks” for digital transformation that shape the nature of enterprise architecture and serve as a basis for their organization. Best practices that have been tried and tested in the field are shared and further refined into leading-edge results that are reliable and ready for immediate use.

The Cross-Business-Architecture Lab is happy to take on new member companies that utilize EAM applications and systems.

Further information is available at www.cba-lab.de.